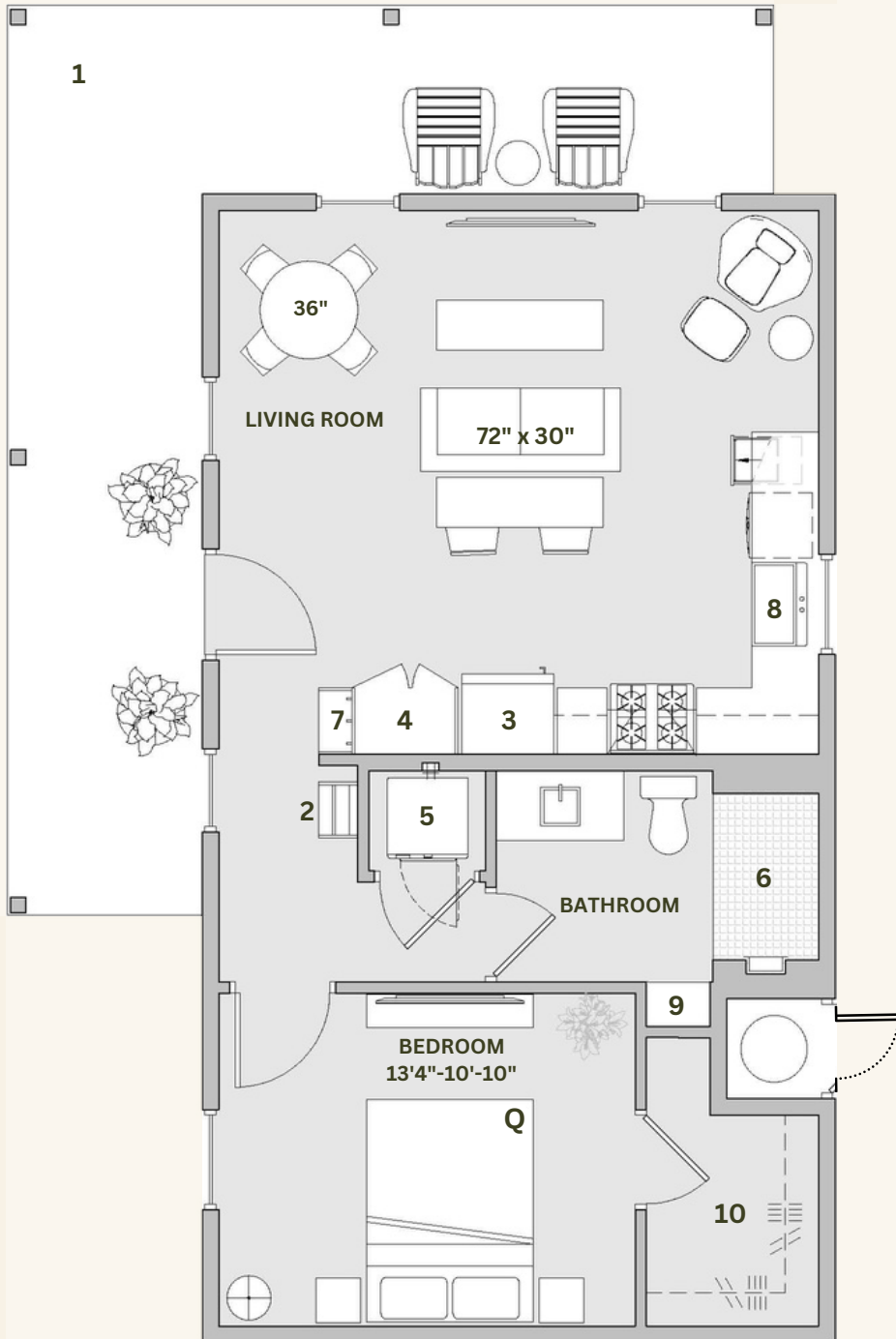


Cottage A

1 bed | 1 bath | 655 sqft + loft + patio



1. Dedicated patio (250 sqft)
2. Loft accessible by ladder
3. 36" fridge
4. Pantry
5. Washer / Dryer
6. Glass shower with tile
7. Built in bench with hooks
8. Kitchen farm house sink
9. Built in shelving
10. Walk-in-closet
11. Electric Water Heater

Rembe Properties

505-850-5588

jack@rembedesign.com

4520 Guadalupe Church St NW

Albuquerque, NM 87107

Cottage A

Loft

